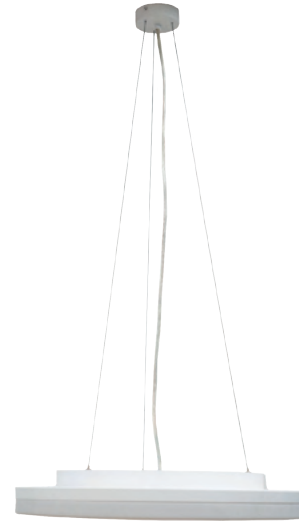


PRODUCT SPECIFICATION

VIDAR Pendant 60

P/N: 100051



SOLUTION DESCRIPTION

PRODUCT DESCRIPTION

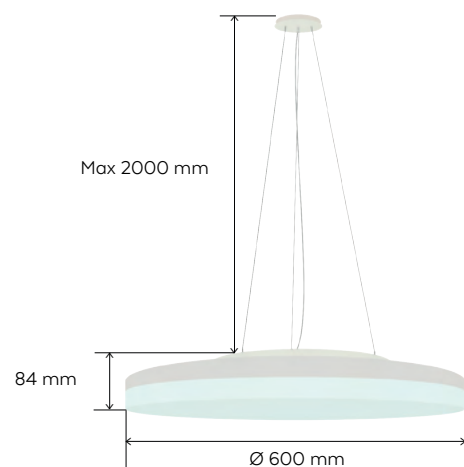
The BrainLit Vidar is a 24/7 Tunable white, pendant, LED luminaire that brings brightness and provides the right light during daytime as well as night time. By dynamically adjusting its color temperature anywhere between cold white (6500K) and blue deprived warm white (1800K), you can transform the ambience of a room and promote the circadian alignment in the right way whether used during day- or night time. The BrainLit Vidar luminaire embraces the black body curve with exceptional color rendering while dimming smoothly down to 0,1%. When used at night, the low color temperature white ensures comfortable blue deprived light to relax or work in.

AREAS OF USE (examples)

Office	High Value Offices / High Risk Offices / Meetings & Seminar Rooms
Industrial	High Value Manufacturing / High Risk Operations / Control Rooms
Education	Conference Centres / Class Rooms
Hospitality	Customer Interaction Centres / Receptions / Conference Rooms / Premium Room Settings / Terminals / Lounges
Healthcare	Intensive Care Units / Wards-Long Term Care / Dialysis Centres
Residential	Nursing Homes / Elderly Care / Luxury

MEASUREMENTS / PACKAGING

Weight (kg)	6,1
Size LxWxH (mm)	NAxNAx84
Diameter (mm)	600
Box quantity	1
Boxed size LxWxH (mm)	660x660x150
Boxed weight (kg)	7,8



MARKET AVAILABILITY

EMEA EU



PRODUCT TECHNICAL SPECIFICATION

LIGHT PROPERTIES

Light source type	LED
LED color temperature	1800K-6500K
Color rendering	CRI/Ra >90
Lumen output	6800lm
mDER range	26%-95%
Beam angle	116°
Dimming range	0,1%-100 %
Flicker handling	$P_{st}^{LM} \leq 1$, SVM $\leq 0,4$, IEEE 1789 comp.
Lifetime	0,88 LLMF (50 000h)
	>100 000h (L70B50)

POWER PROPERTIES

Rated input power	56W
Efficacy*	121 lm/W
Supply voltage range	120-250V
Supply power frequency	50/60Hz
Maximum circuit breaker loading (no of luminaires):	B10 B13 B16 C10 C13 C16 @230V 21 27 33 21 27 33
DALI device type	6
DALI address usage	4
DALI-2 compliant	Yes
Power and DALI connector	WAGO WINSTA®. Cable length: 0,5m

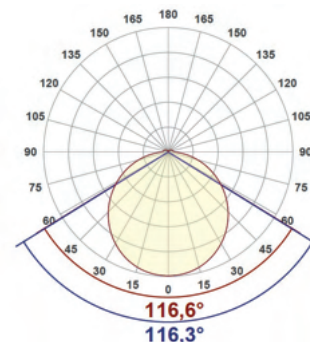
MECHANICAL PROPERTIES

Colors	White matte (RAL 9003)
Material	Steel, PMMA
Configuration	Backlit
Mounting	Pendant
IP rating	20
Certifications	CE

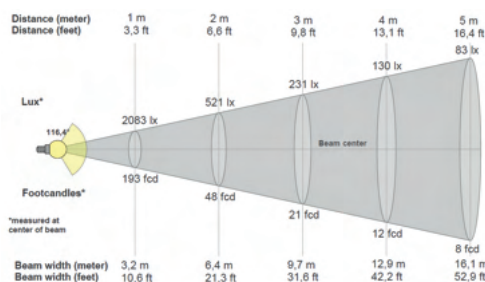
*At maximum intensity and CCT

TYPICAL CHARACTERIZATION DATA

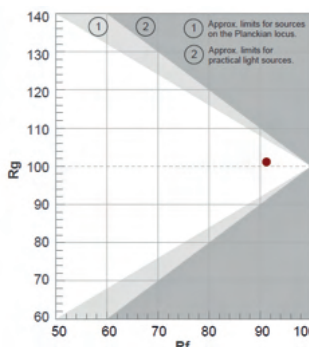
Light distribution



Beam description

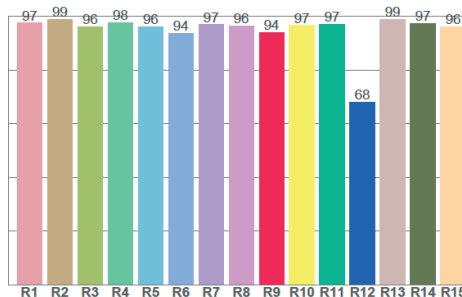


Color rendering TM-30



Color rendering CRI, (CIE 1931)

CRI: 96,6 (R1-R8)



This document contains information that is subject to change without notice. This document is solely intended for, and may only be used for, the purpose of providing luminaire products to the BrainLit BioCentric Lighting System. The performance indications for BrainLit products set forth in this document are based on, and conditioned on, the products being used solely in the BrainLit BioCentric Lighting System. However, this document shall not be deemed a product warranty, whether express or implied. The BrainLit product warranty is solely contained in the purchase agreement with each customer. This document is subject to BrainLit AB's copyright. No part of this document may be reproduced or transmitted in any form or by any means, or shared with any third party, without the prior written approval of BrainLit AB. BrainLit products may be protected by one or more patents and by copyright and design rights. "BrainLit" and "BioCentric Lighting" are registered trade marks of BrainLit AB. This document does not confer upon the recipient a license to any of BrainLit intellectual property rights.